



A fantastical scene set in a dark, misty forest. In the foreground, a large, dark dragon with purple wings is flying towards the viewer. In the background, several other dragons of similar color are flying through the air. To the left, a silhouette of a suspended theater is visible, with several figures seated inside. The forest is filled with large, gnarled trees and vibrant, colorful plants, including a large yellow and red flower in the foreground. The overall atmosphere is mysterious and magical.

SUSPENDED THEATER® BRINGS THE UNIQUE SENSATION  
OF FLIGHT TO LIFE IN A WHOLE NEW WAY.



**Suspended**  
THEATER®



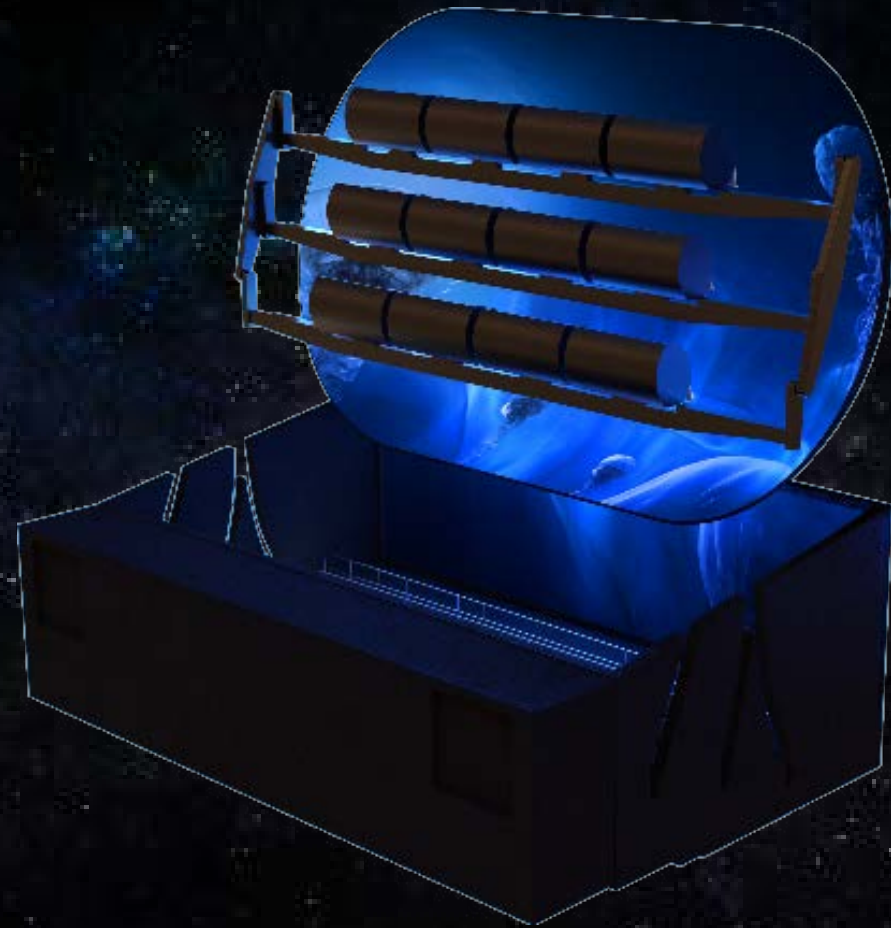
**CLICK PLAY  
TO WATCH VIDEO**

in your browser

## DREAMS OF FLIGHT...

Suspended Theater® delivers the unique sensation of flight in a whole new way. This system forges an unparalleled experience that is both family friendly, yet thrilling; immersive, yet practical; magical, yet accessible. This is the most elegant flying system available, empowered by a series of key features that make it the perfect vessel for immersive storytelling, including its patented Reveal Technology®.

Throughout the ride, guests are immersed in the spectacle of the media content, no matter where they look. Whether flying across fabulous landscapes or immersive dreamscapes, the journey is seamless – the story, uninterrupted. Once lift off occurs, there is only pure, uninhibited flight.







Utilizing freedom of motion, the Suspended Theater® glides through its experiences with seamless grace and precision. With pitch, roll and heave, guests get to experience the motion of a system that as fast as it is powerful, controlled by movements perfectly refined to synchronize with the media.

The Suspended Theater® is unmatched in the world of flying ride systems. It exudes raw power and elegance as it takes its riders soaring across inspiring adventures. This is more than a simulator of dynamic movement. This is a vessel for storytelling that will move its audiences in far more ways than one.

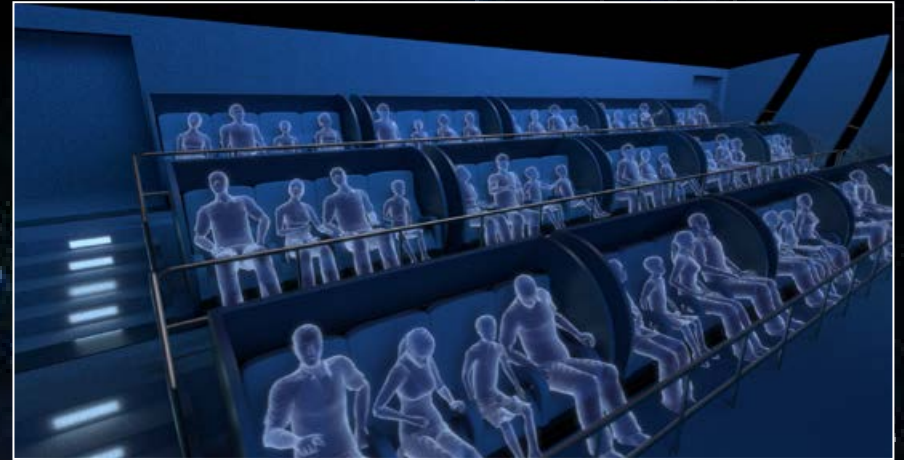
The experience begins in the loading area, a traditional low-ceilinged space that gives the guests the impression that they are in a standard theater venue. They take their seats and media begins on a small screen. Suspense builds but, at the same time, guests become momentarily complacent – lulled into a false sense of passivity as the story starts to take shape.

Then, as the action on screen swells for a sudden burst of movement, guests experience the big reveal. The ceiling seems to be ripped away from above as they take off. Raised by a unique lifting system, the guests tilt into place, elegantly soaring skyward into a large, incredible vista of spectacular, immersive storytelling.



## EXCLUSIVE THEATER REVEAL ...

Harnessing the power of a uniquely designed system, guests experience a momentous reveal at the beginning of their journey. All components of the ride system are hidden from guest view during loading and unloading. Guests enter what appears to be a standard widescreen theater, during which can be delivered an anticipation-building preshow. It isn't until the main show begins, however, that the ceiling of this 'theater' lifts off and the compound curved 3D screen of the larger theater is unveiled, igniting the story to life with a memorable beginning that is sure to literally sweep guests off their feet. This feature is exclusive to Suspended Theater®.





The background image is a dark, atmospheric scene of a city at night. In the foreground, a large, ornate building with a prominent dome is visible on the right. The city is illuminated with warm, golden lights, creating a dramatic contrast with the dark sky. A large, suspended structure, likely the theater mentioned in the text, is visible in the upper left, with its cables and supports extending across the frame. The overall mood is mysterious and grand.

## THE TECHNICAL INFORMATION

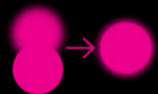
Suspended Theater® encompasses multiple integrated technologies to support and enhance the guest experience. The integrated design hides the specifics of the cutting-edge technologies from guest view to maintain focus on the story. However, as an owner/operator, these technologies are specifically employed to ensure Suspended Theater® runs efficiently and smoothly while reducing the long-term maintenance requirements. The following are a few of the key technologies integrated in the system:





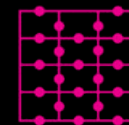
## EXCLUSIVE THEATER REVEAL

The show begins in a lower, smaller-scale theater with rear projection. The content on this smaller-scale screen then seamlessly transitions to the large-scale enveloping media screen as the theater seats physically rise into the air, complimenting the reveal's wow-factor with visceral movement and excitement. This signature theater reveal of the Suspended Theater® is exclusive to this Falcon's product.



## MULTI-PROJECTOR AUTO-ALIGNMENT SYSTEM

The single push button auto-alignment procedure analyzes the position and focus of each projector relative to each other making small adjustments to ensure the media remains as crisp and clear as the first day of operation.



## MULTI CHANNEL AUDIO ZONING

Taking the term "surround sound" to a whole new level, the Suspended Theater® breaks up the audio system into horizontal and vertical rows with discrete channel speakers allowing the music and sound effects to float through the space alongside the 3D imagery.





## LARGE-SCALE 3D MEDIA

The use of unique media production techniques enables guests to see 3D objects throughout their wide vista, ultimately allowing 3D objects to extend from the large-scale 3D stereoscopic media screen and appear to soar through the theater space.



## SEAMLESS WALK-IN LIGHTING

Entry and exit through the attraction are complimented by effective ambient lighting, providing an atmospheric transition between spaces that preserves the integrity of the environment's mood while also ensuring safety for all visitors.



## INTEGRATED SHOW SFX (OPTIONAL)

Sensory special effects (SFX) are a feature to the attraction that dramatically enhance the immersion and impact of the media content. Suspended Theater® allows for wind, vibration, scent, and water spritz effects to be included in the experience.



## 2 DEGREES OF FREEDOM (DOF)

Employing pitch and heave offers total freedom to synchronize the ride system with the on-screen action.



## VARIED CAPACITY

The Suspended Theater® product can be packaged to meet a wide range of facility and capacity needs, with scaled solutions offered to encompass visitor quantities that range across the following: 24, 48, or 80 persons.





## SFX MOTION SEATS

*(OPTIONAL)*

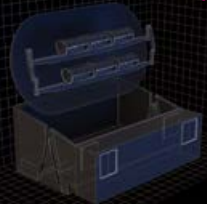
The Suspended Theater® ride system can include the addition of 4D-theater type seating, enhancing the depth of visceral motion guests can experience throughout the show.



## AEON INTERACTIVE EXPERIENCE

*(OPTIONAL)*

Introducing AEON Interactivity powered by Falcon's Creative Group. AEON is a customizable technology solution that introduces immersive gamification to the ride experience, elevating the attraction to a new dimension of engagement, personalization, and entertainment value.

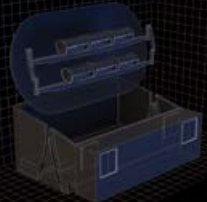


**LT SILVER**

**CAPACITY:** 24

**SIZE:** 29 X 17 X 16

**MEDIA:** 2D

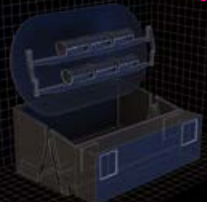


**LT GOLD**

**CAPACITY:** 24

**SIZE:** 29 X 17 X 16

**MEDIA:** 3D

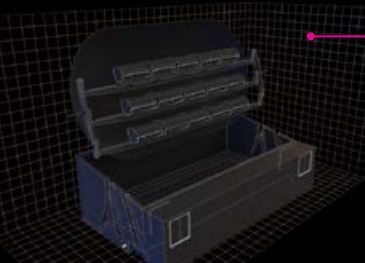


**LT PLATINUM**

**CAPACITY:** 24

**SIZE:** 29 X 17 X 16

**MEDIA:** AEON

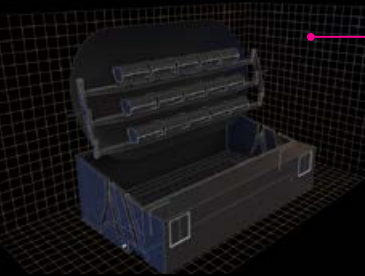


**SILVER**

**CAPACITY:** 48

**SIZE:** 32 X 17 X 18

**MEDIA:** 2D

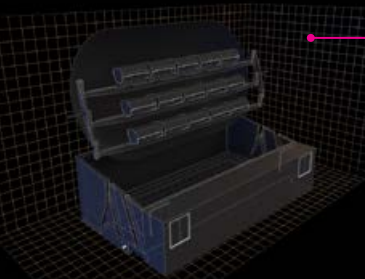


**GOLD**

**CAPACITY:** 48

**SIZE:** 32 X 17 X 18

**MEDIA:** 3D

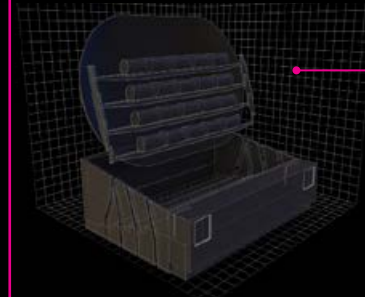


**PLATINUM**

**CAPACITY:** 48

**SIZE:** 32 X 17 X 18

**MEDIA:** AEON

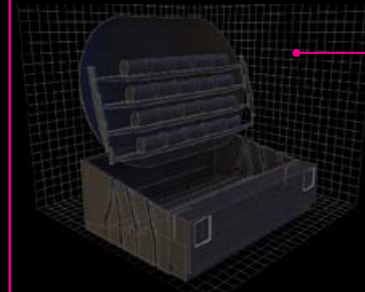


**XT SILVER**

**CAPACITY:** 80

**SIZE:** 35 X 19 X 22

**MEDIA:** 2D

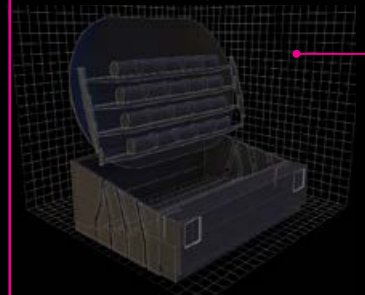


**XT GOLD**

**CAPACITY:** 80

**SIZE:** 35 X 19 X 22

**MEDIA:** 3D



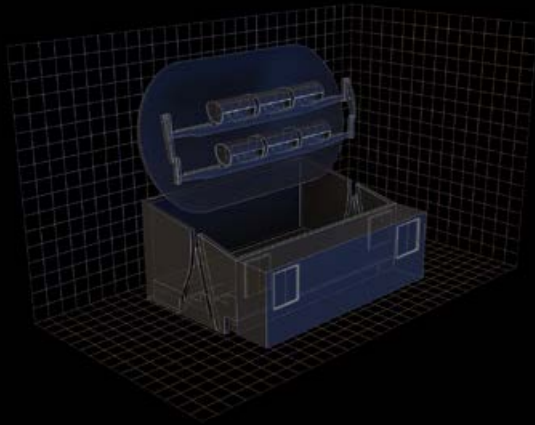
**XT PLATINUM**

**CAPACITY:** 80

**SIZE:** 35 X 19 X 22

**MEDIA:** AEON





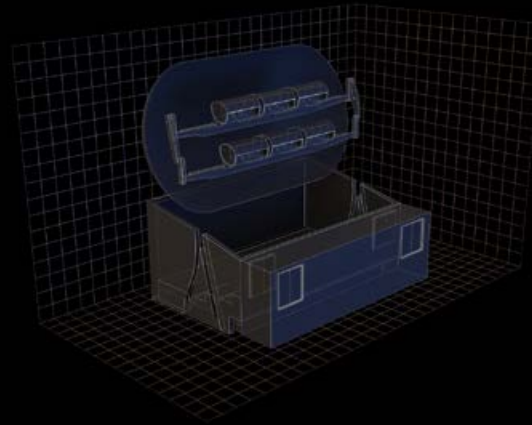
LT  
**SILVER**

**CAPACITY:** 24

**SIZE:** 29 X 17 X 16

**MEDIA:** 2D

**ONBOARD TECH:** None



LT  
**GOLD**

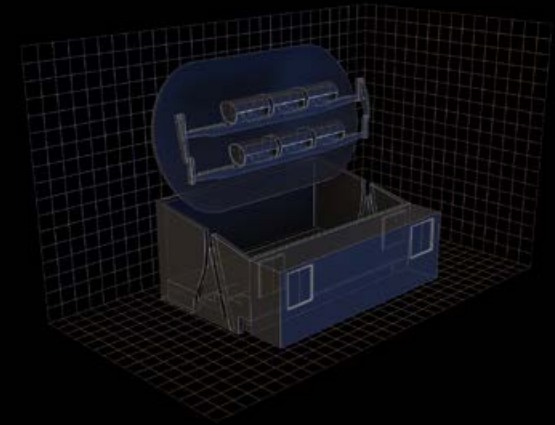
**CAPACITY:** 24

**SIZE:** 29 X 17 X 16

**MEDIA:** 3D

**ONBOARD TECH:**

- Onboard Audio
- Onboard Lighting
- Onboard scent
- Onboard wind



LT  
**PLATINUM**

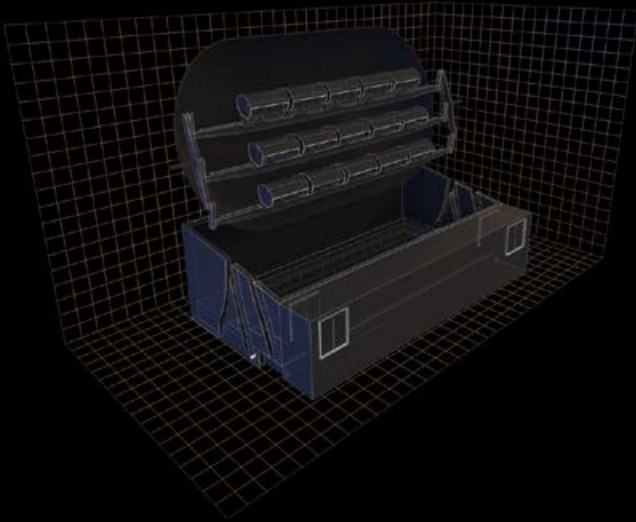
**CAPACITY:** 24

**SIZE:** 29 X 17 X 16

**MEDIA:** AEON

**ONBOARD TECH:**

- Onboard Audio
- Onboard Lighting
- Scent Compressed Air Burst
- Onboard scent
- Onboard wind
- Water spritz
- 4D Theater motion seats



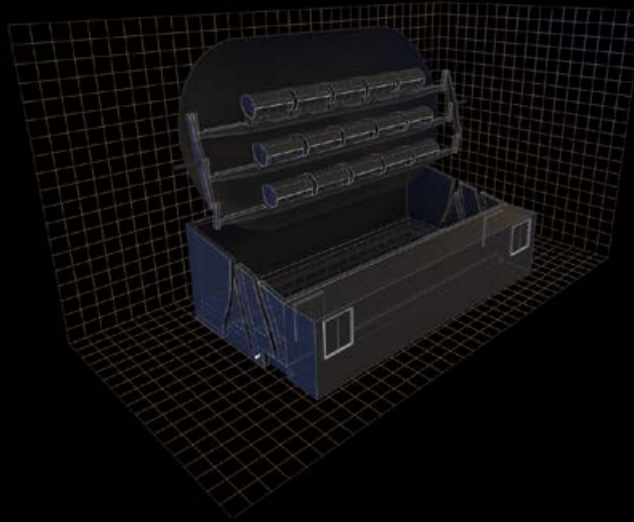
## **SILVER**

**CAPACITY:** 48

**SIZE:** 32 X 17 X 18

**MEDIA:** 2D

**ONBOARD TECH:** None



## **GOLD**

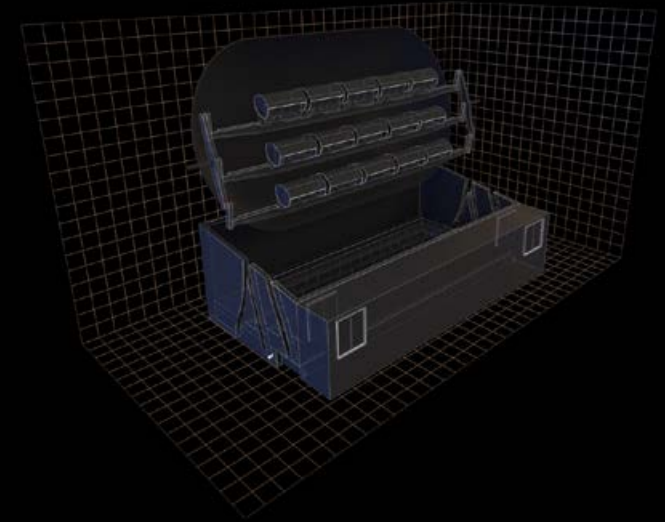
**CAPACITY:** 48

**SIZE:** 32 X 17 X 18

**MEDIA:** 3D

**ONBOARD TECH:**

- Onboard Audio
- Onboard Lighting
- Onboard scent
- Onboard wind



## **PLATINUM**

**CAPACITY:** 48

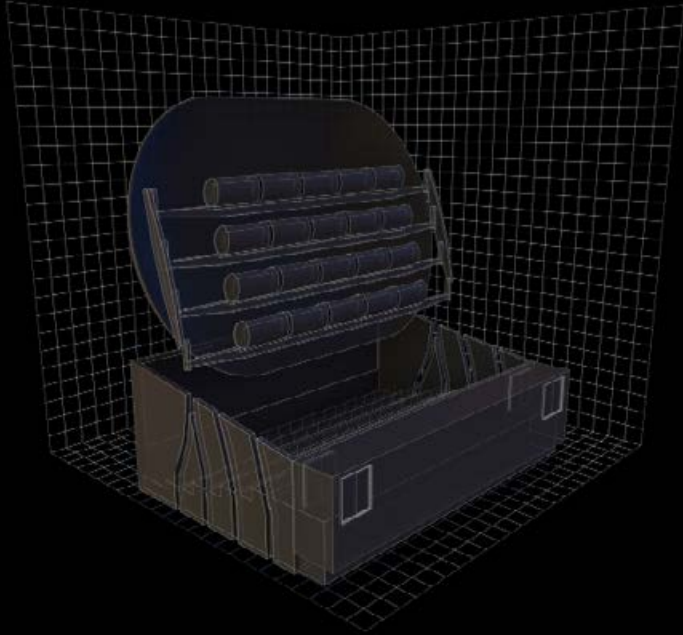
**SIZE:** 32 X 17 X 18

**MEDIA:** AEON

**ONBOARD TECH:**

- Onboard Audio
- Onboard Lighting
- Scent Compressed Air Burst
- Onboard scent
- Onboard wind
- Water spritz
- 4D Theater motion seats





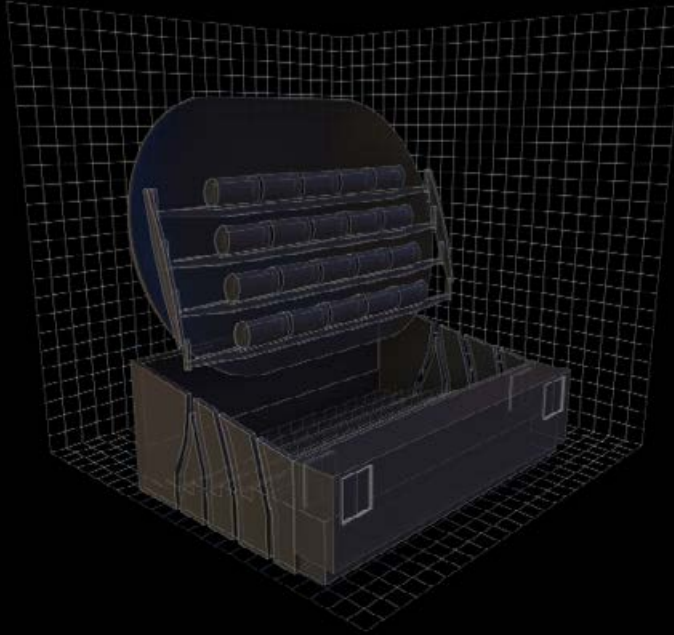
**XT**  
**SILVER**

**CAPACITY:** 80

**SIZE:** 35 X 19 X 22

**MEDIA:** 2D

**ONBOARD TECH:** None



**XT**  
**GOLD**

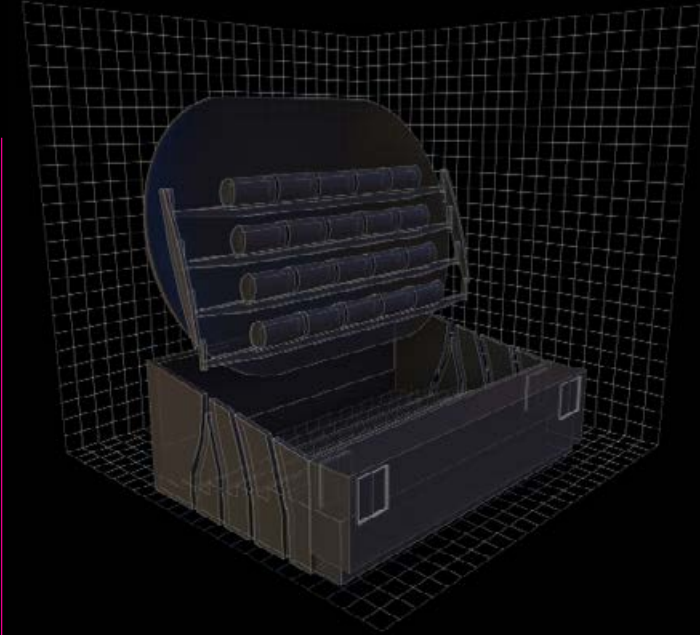
**CAPACITY:** 80

**SIZE:** 35 X 19 X 22

**MEDIA:** 3D

**ONBOARD TECH:**

- Onboard Audio
- Onboard Lighting
- Onboard scent
- Onboard wind



**XT**  
**PLATINUM**

**CAPACITY:** 80

**SIZE:** 35 X 19 X 22

**MEDIA:** AEON

**ONBOARD TECH:**

- Onboard Audio
- Onboard Lighting
- Scent Compressed Air Burst
- Onboard scent
- Onboard wind
- Water spritz
- 4D Theater motion seats



To learn more about the Suspended  
Theater® or to contact us for additional  
details, please visit the product  
website at

[www.suspendedtheater.com](http://www.suspendedtheater.com)